

# NOVERTEC [engineering]

- energy
- environment
- industry



*our energy  
is yours*



**NOVERTEC** – Joint stock company – Capital: 50 000 €  
29 rue Henri Luck – L-3737 RUMELANGE – Luxembourg  
[www.novertec.eu](http://www.novertec.eu)

**NOVERTEC**, company of the ARPAAN Group, is specialized in consulting and engineering for energy related projects.

This specificity is based on the growing importance – current and future – of costs and needs in energy. Many industries must face the rising costs of energy feedstocks, to environmental regulation, and must integrate the “sustainable energy” concept through biomass deposits...

Engineers, technicians and associated consultants of **NOVERTEC**, with their wide experience in industrial energy, are able to support their partners for energy projects, in Europe or anywhere else in the world.

## ENERGY

**NOVERTEC** can deal with every industrial project related to thermal or electrical energy, from 5 to 1 500 MW, whatever the type of primary energy used:

- Coal, including derivatives and washing by-products
- Gases, including residual industrial lean gases
- Fuel oil
- Biomass and renewable energies

Our skill field covers the whole transformation and utilization chain of energies:

- Storage, handling and treatment of fuels (grinding, drying, inerting...)
- Fuel utilization, according a large panel of technologies and thermodynamic cycles:
  - Gas:
    - Gas turbines
    - Gas boilers (including post-combustion boilers)
    - Combined cycles
  - Coal:
    - Pulverized coal burners
    - Fluidized bed boilers (circulating or dense)
  - Fuel oil:
    - Liquid fuel boilers
    - Liquid fuel turbines
  - Gas/coal mixed cycles
  - Biomass combustion or associated combustion
- Storage, handling and treatment of solid residues (dry or hydraulic handling systems...)
- Evacuation, distribution and utilization of electricity (all voltages)
- I & C

## ENVIRONMENT

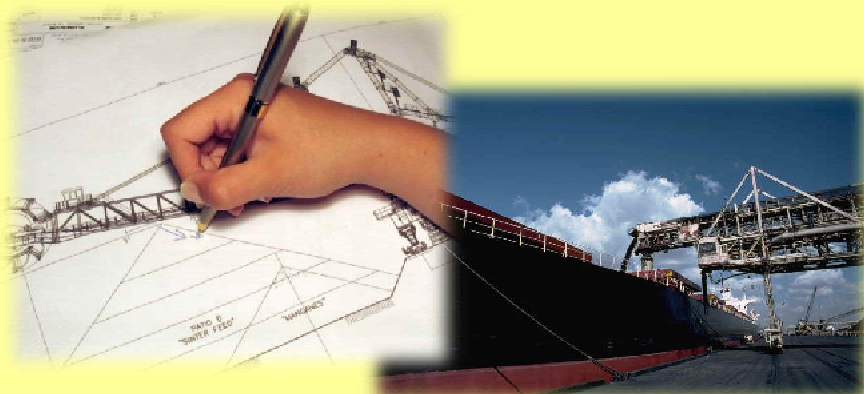
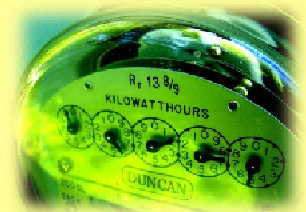
In the sector of environment related to energy, the skills of **NOVERTEC** are the following:

- Flue-gas treatment (dedusting, desulfurization, denitrification...)
- Biomass use, by combustion or associated combustion
- Storage, handling, treatment and valorization of solid residues

## SERVICES

Our possibilities of partners' supports:

- Consulting
  - Expertise of existing installations
  - Critical analysis of projects
  - Strategic choices and orientations
  - Advices for energy savings
  - Optimization and rationalization for energy use
  - Support by teams' reinforcement
- Engineering
  - Dimensioning, technical and economical feasibility study
  - Technical and economical preliminary study
  - Development of technical specifications
  - Project management
  - Technical assistance to contracting
  - Follow-up of implementation
  - Assistance to commissioning and acceptance



## CONTACT

### **NOVERTEC S.A.**

29 rue Henri Luck  
L-3737 RUMELANGE (Luxembourg)

tel.: +352 26 56 38 45

[info@novertec.eu](mailto:info@novertec.eu)

<http://www.novertec.eu>